

The Role of Humans in **the Age of AI**



“Intelligence too cheap to meter is well within grasp.”

Sam Altman predicts superintelligence by 2030.



“We’ll have a country of geniuses in a data center.”

Dario Amodei predicts AGI by early 2027.



"10× the impact of the Industrial Revolution, at 10× the speed, in a decade rather than a century."

Demis Hassabis says 50% probability of AGI by 2030.

ANTHROPIC

100%

of the code in AI Labs like Anthropic is now written with AI.

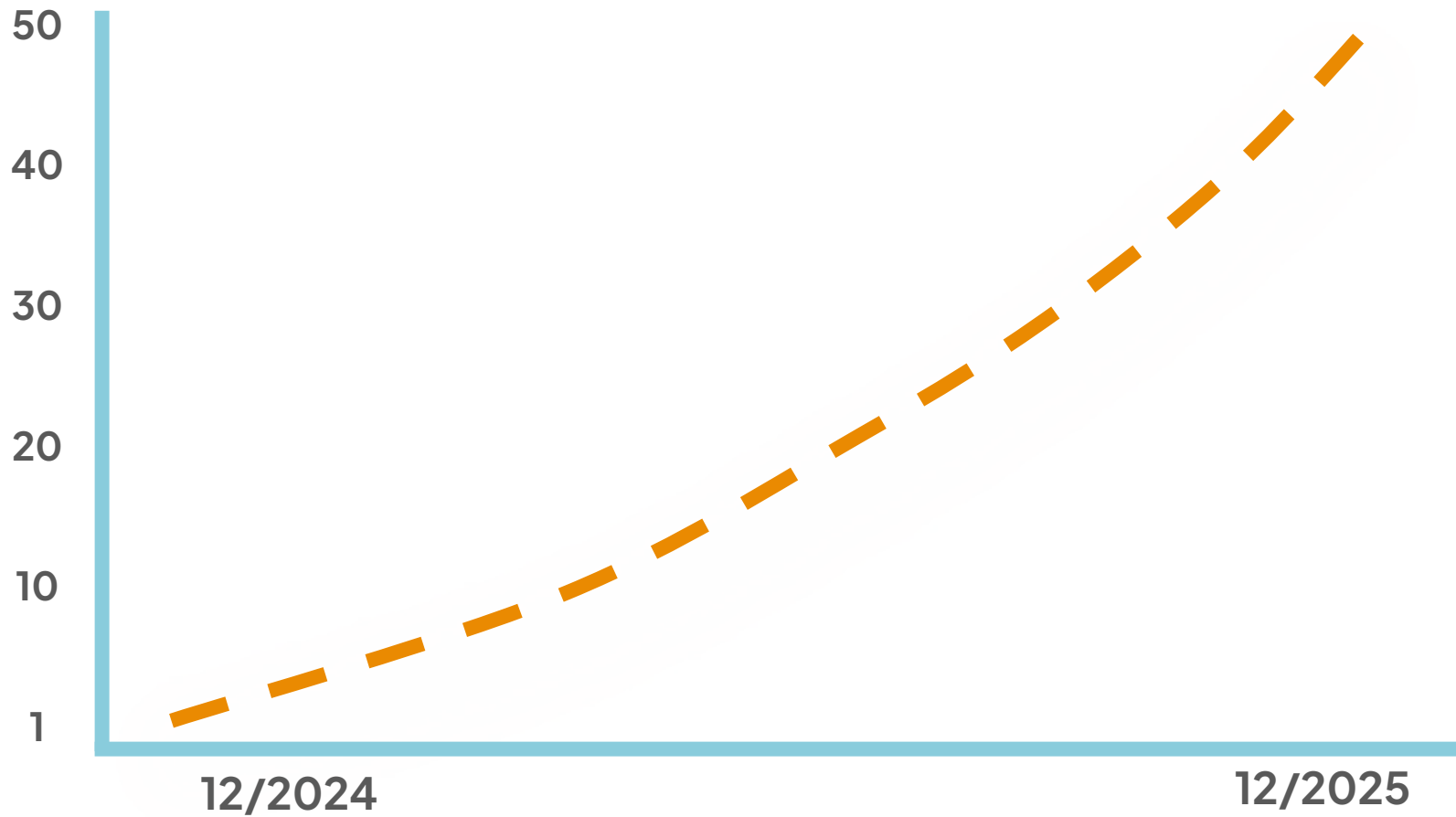
2.5
TRILLION

Global AI spending in 2026 in USD.

280x

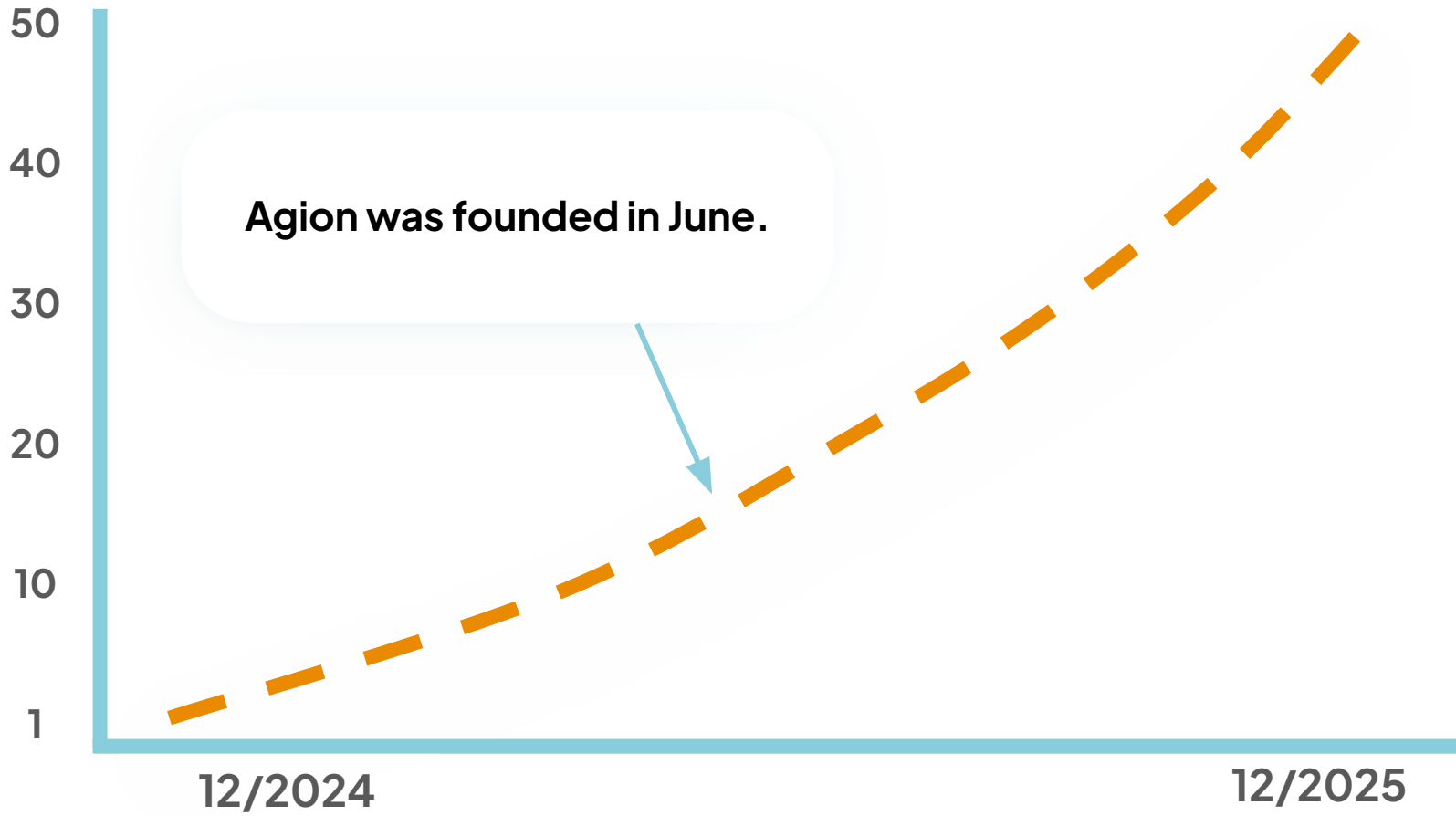
Reduction in the cost of equivalent AI in 2 years.

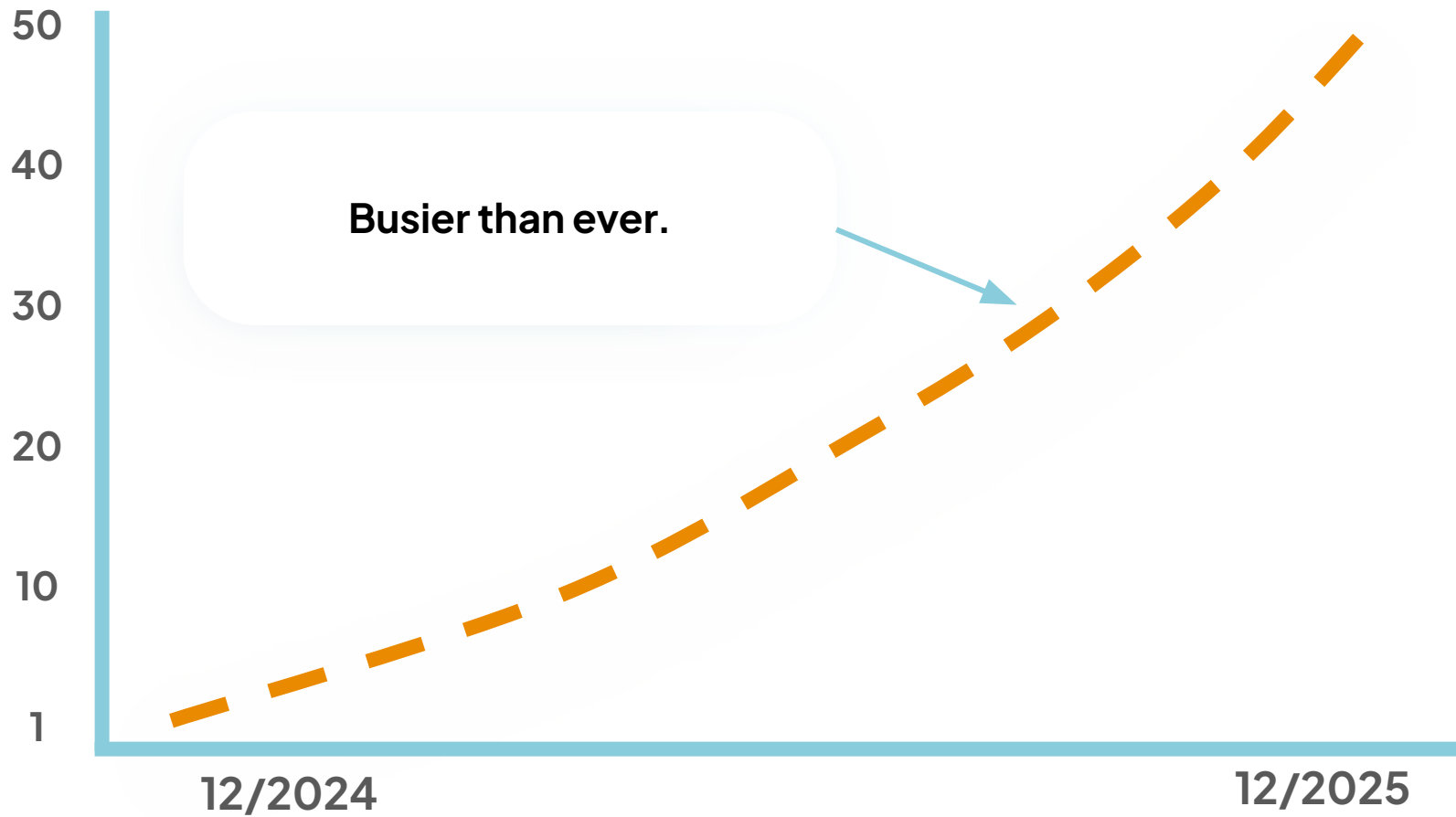
What does this mean
in practice?

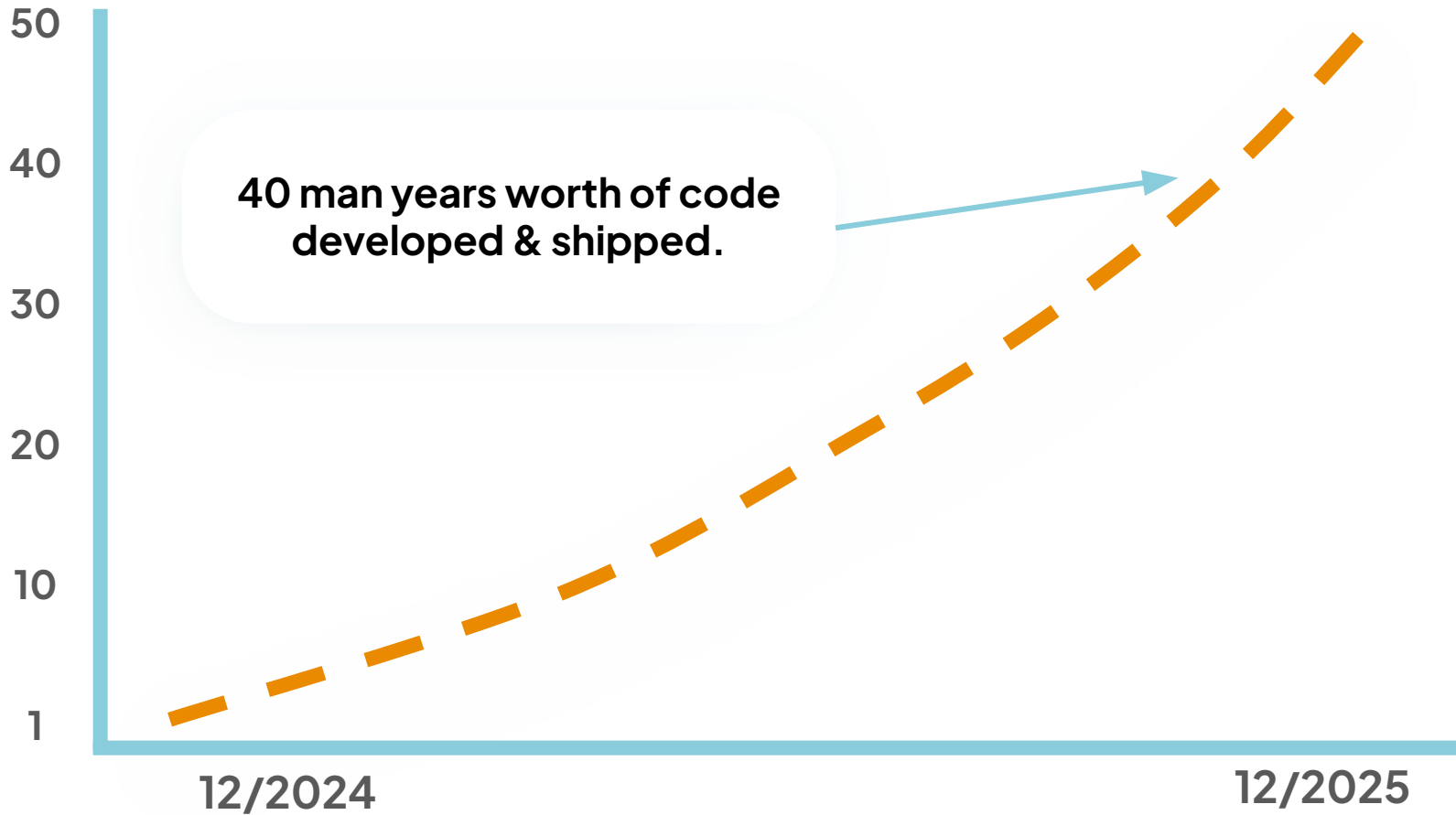


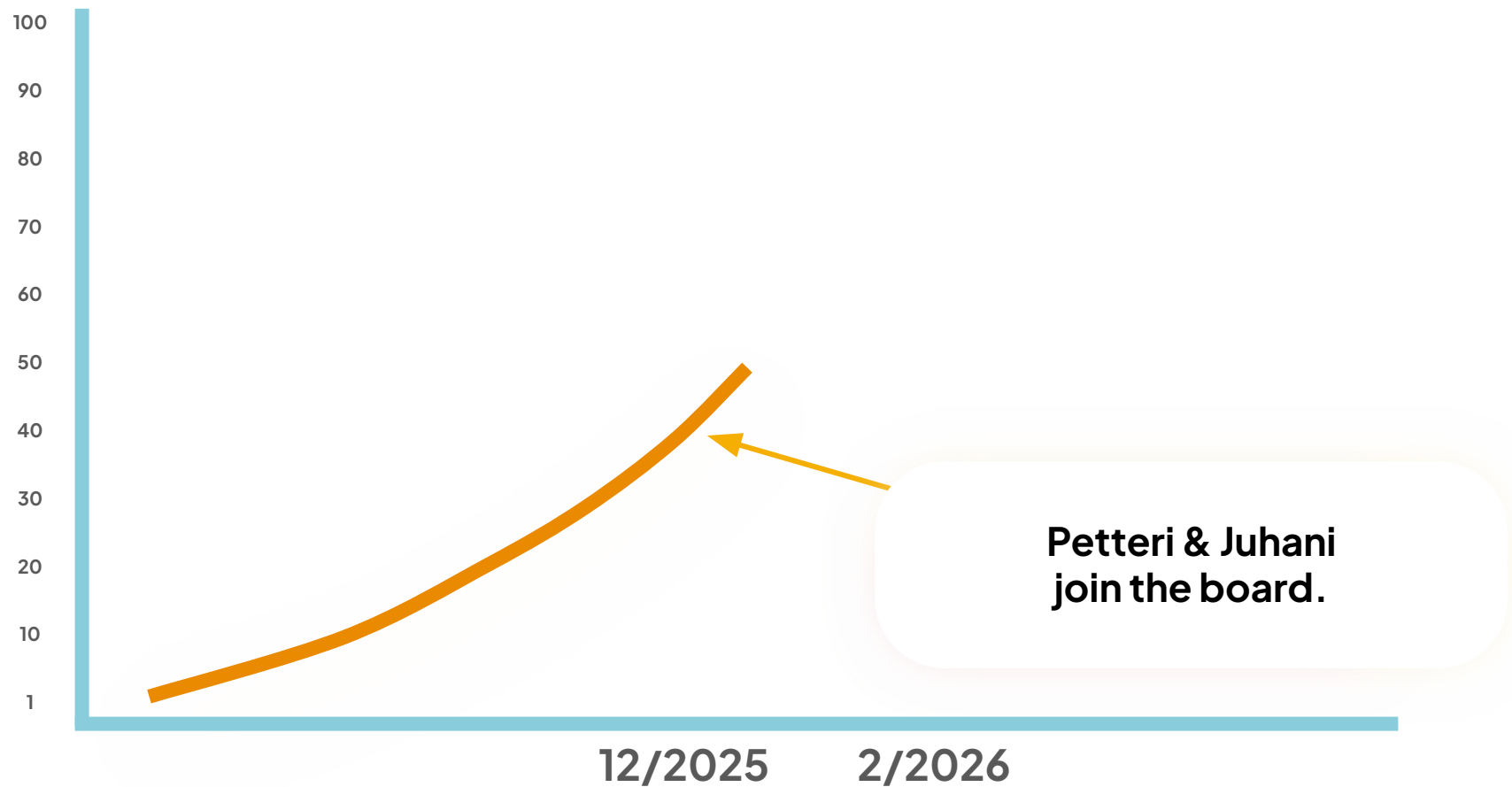


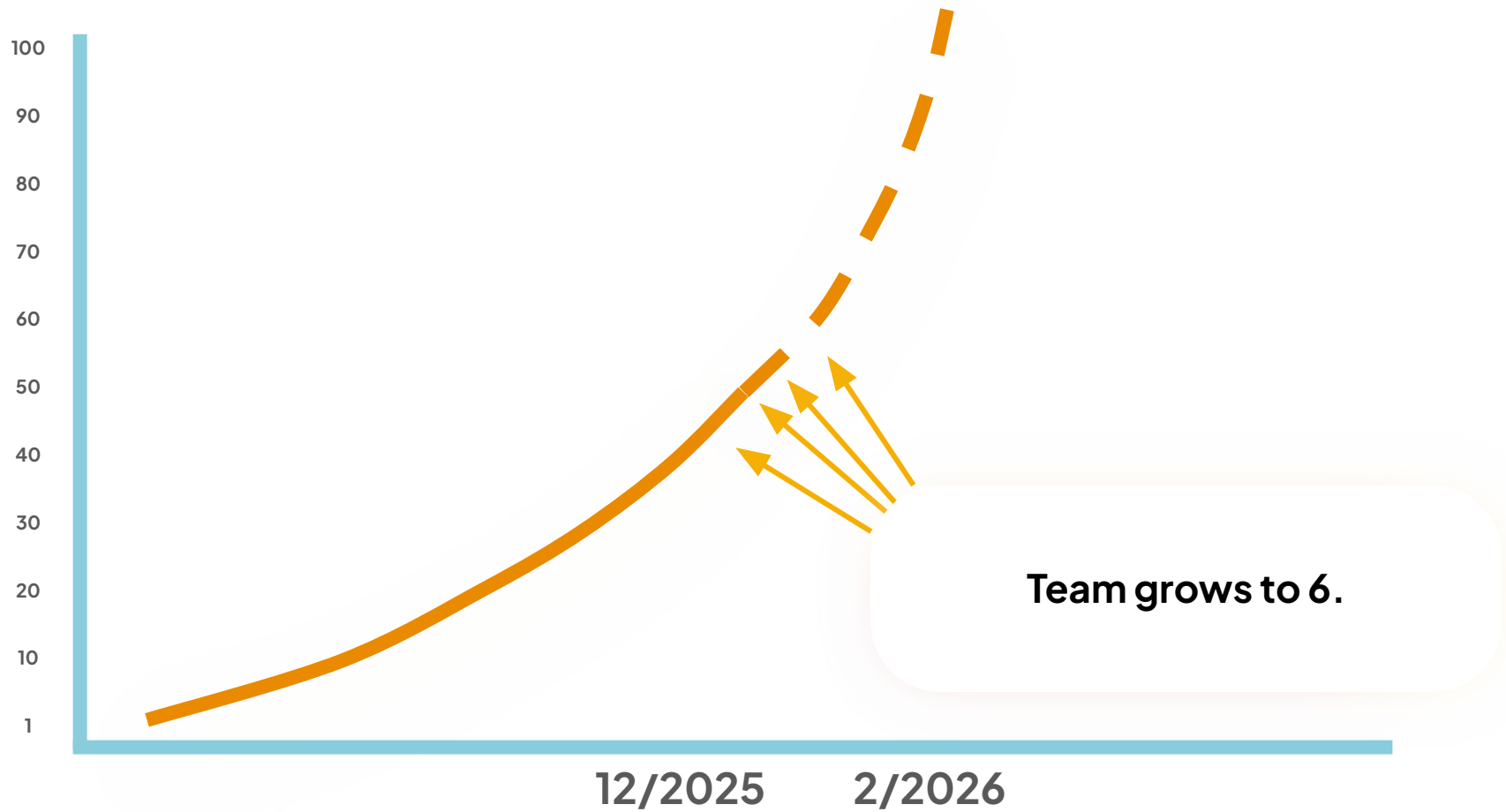


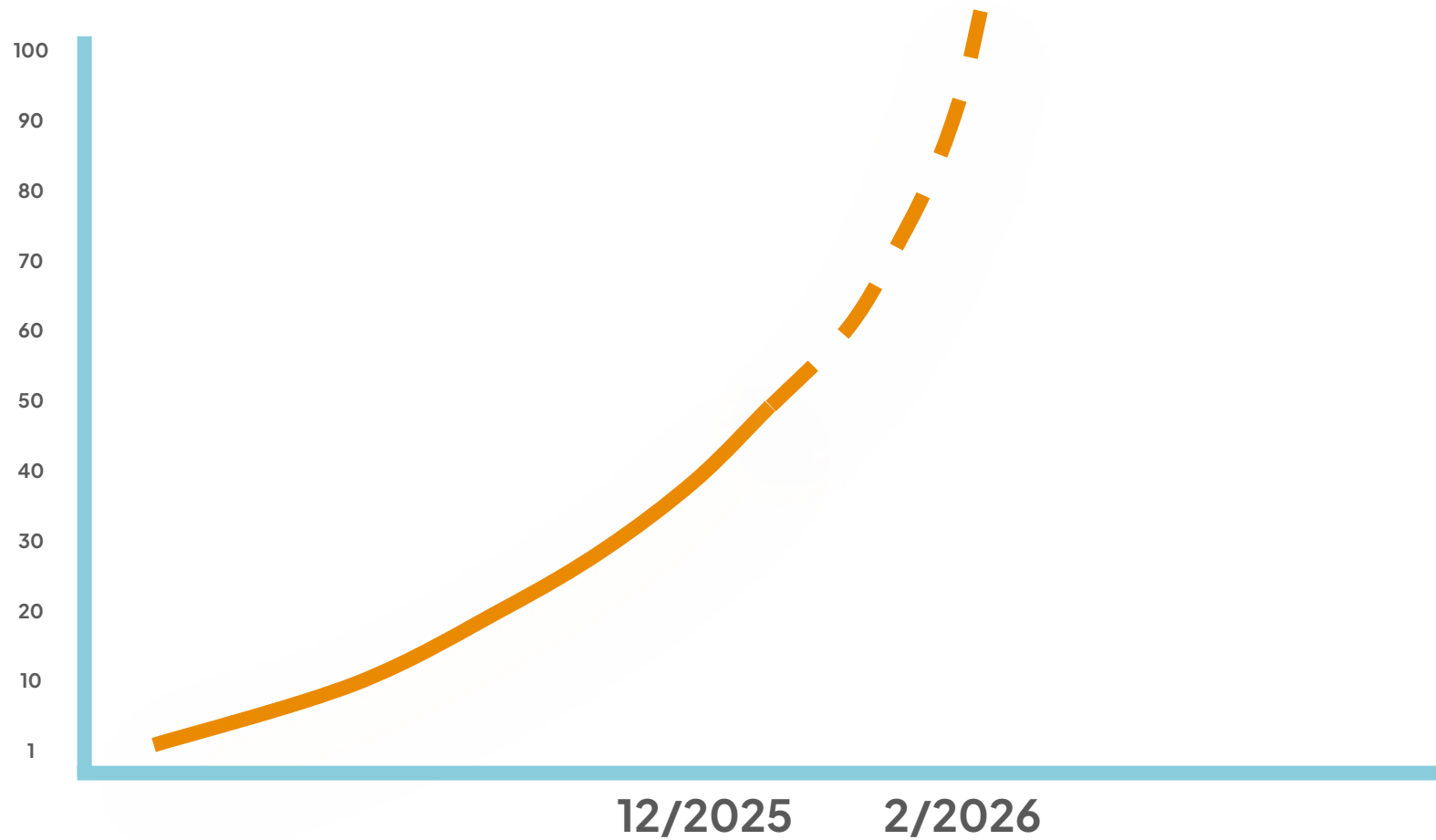






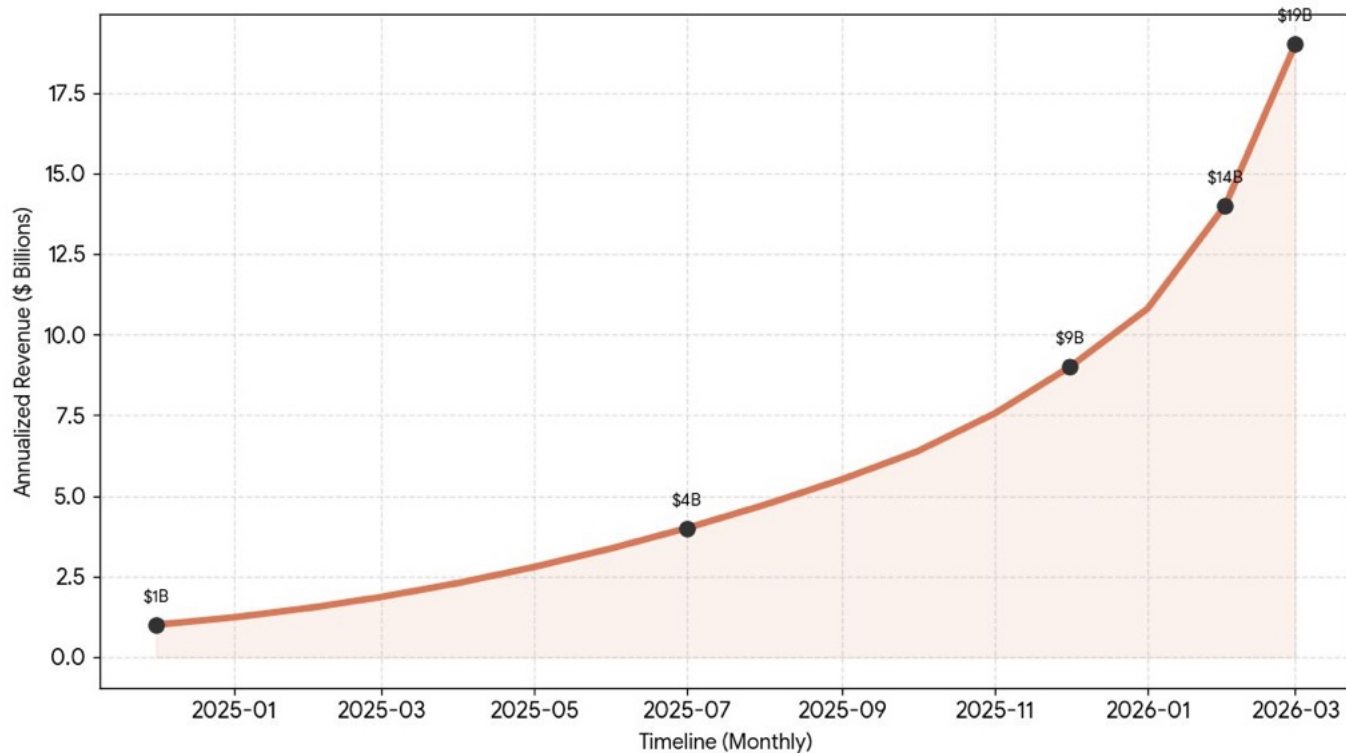






ANTHROPIC

Anthropic Monthly Revenue Run Rate Acceleration



Transitions

Human Organization

- People do the work
- Being a specialist is valuable
- Organization succeeds from skilled leadership of specialized human labor
- Competitiveness is based on human knowledge and collective experience in the industry

AI-Native Organization

- People set the rules, plan and orchestrate
- AI agents perform majority of the specialist work, and humans perform more generalist tasks
- Agents are governed by code, not by humans
- The quality of data and the organization's ability to leverage it with agents is the core competitive edge

App-Centric Organization

- Hundreds of specialized apps
- Data structures optimized for user interfaces, not for agentic learning
- App makers try to become the “system of record” and take the data hostage
- Everyone targets to become the “industry standard”, which means no company gains an edge over others

Data-Centric Organization

- Collects unique data, builds intelligent data architecture and systems that learn
- Agents utilize data efficiently, and learn & adapt continuously
- Those organizations who learn the fastest will gain an edge
- The value of apps goes to zero, the ability to turn data into intelligence is the most important competitive edge.

Dependency on US giants

- “Everyone uses Microsoft”
- Data and apps hosted in hyperscaler clouds
- AI from Microsoft, Anthropic, OpenAI and Google
- Business runs on the enterprise SaaS and agents from American giants.

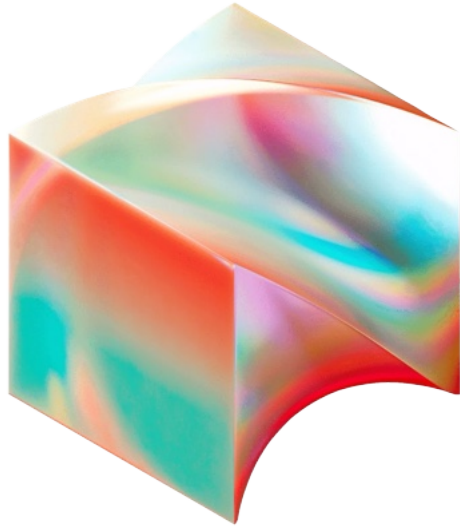
Sovereignty

- You want to be in charge of your most valuable assets, which are data and intelligence
- Dependency on American giants is a operational and political risk
- Change is constant and rapid, and the organization has to adapt all the time
- Productivity arises from AI-Native transformation, not from adding agents to apps

4x

PRODUCTIVITY GROWTH

In AI exposed industries, according to PwC.



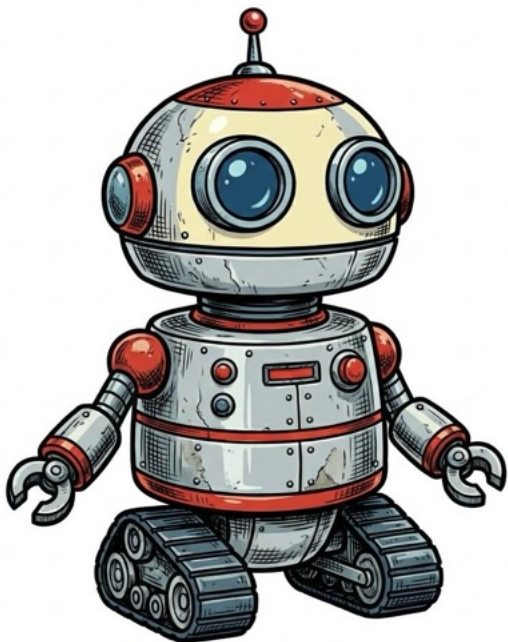
40%

of Block's workforce was laid off to adapt to the age of AI.




90%

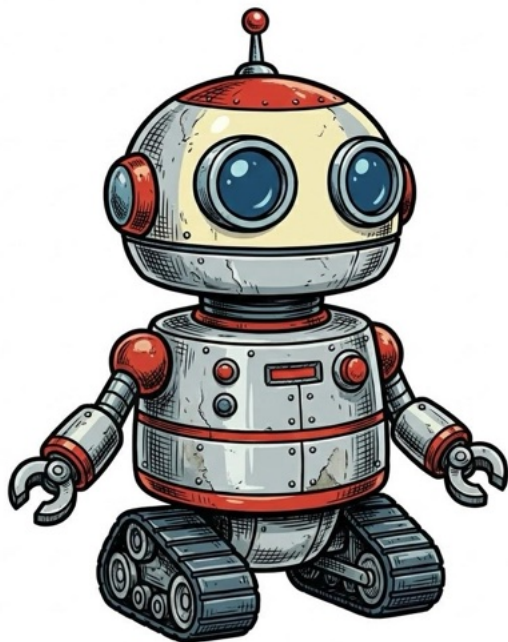
of the the labor force has to be reskilled due to AI.

The Agent Revolution

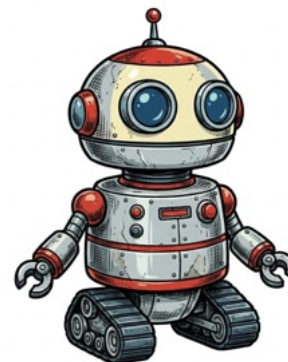


Here are your 3 best options for a flight to Malaga:

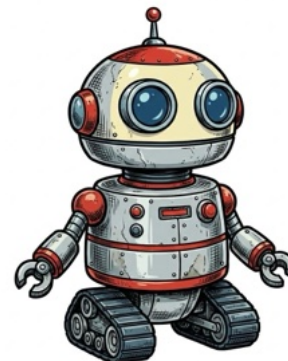
	8:40 AM – 4:20 PM Air Baltic	8 hr 40 min HEL-AGP	1 stop 3 hr 5 min RIX	338 kg CO2e +16% emissions ⓘ	€172 ▾
	6:30 AM – 10:15 AM Finnair	4 hr 45 min HEL-AGP	Nonstop	315 kg CO2e +8% emissions ⓘ	€207 ▾
	11:20 AM – 6:45 PM Scandinavian Airlines - Operated by Sas Connect	8 hr 25 min HEL-AGP	1 stop 2 hr 50 min CPH	294 kg CO2e Avg emissions ⓘ	€256 ▾

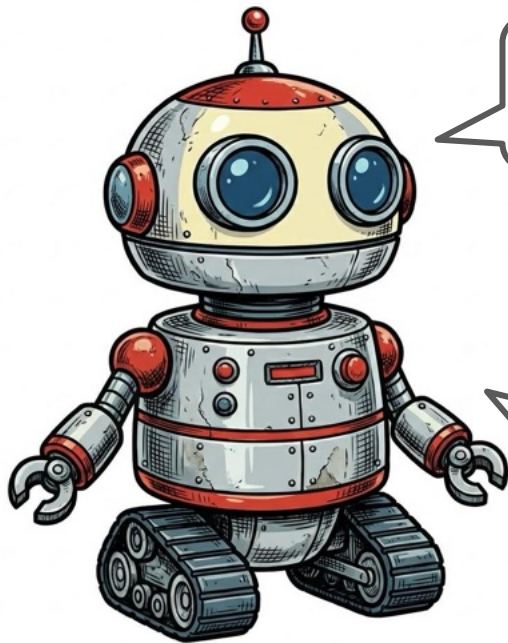


Find the best flights from Helsinki to Malaga on Friday 30.1.2026.



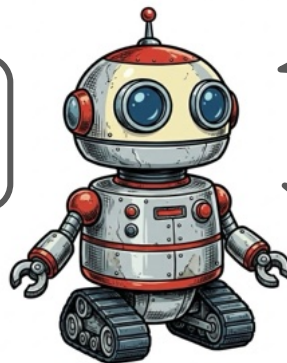
Find the best room offers from at least four star hotels in Malaga on 30.1.2026.





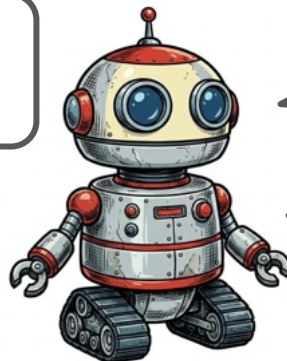
Manage the product engineering agent swarm to world leading performance.

Manage the commercial agent swarm to maximize business growth.



Make sure our backend code is secure, scalable and performant.

Optimize the user interface to maximize customer satisfaction.



Post to social media channels and A/B test the performance of different narratives.

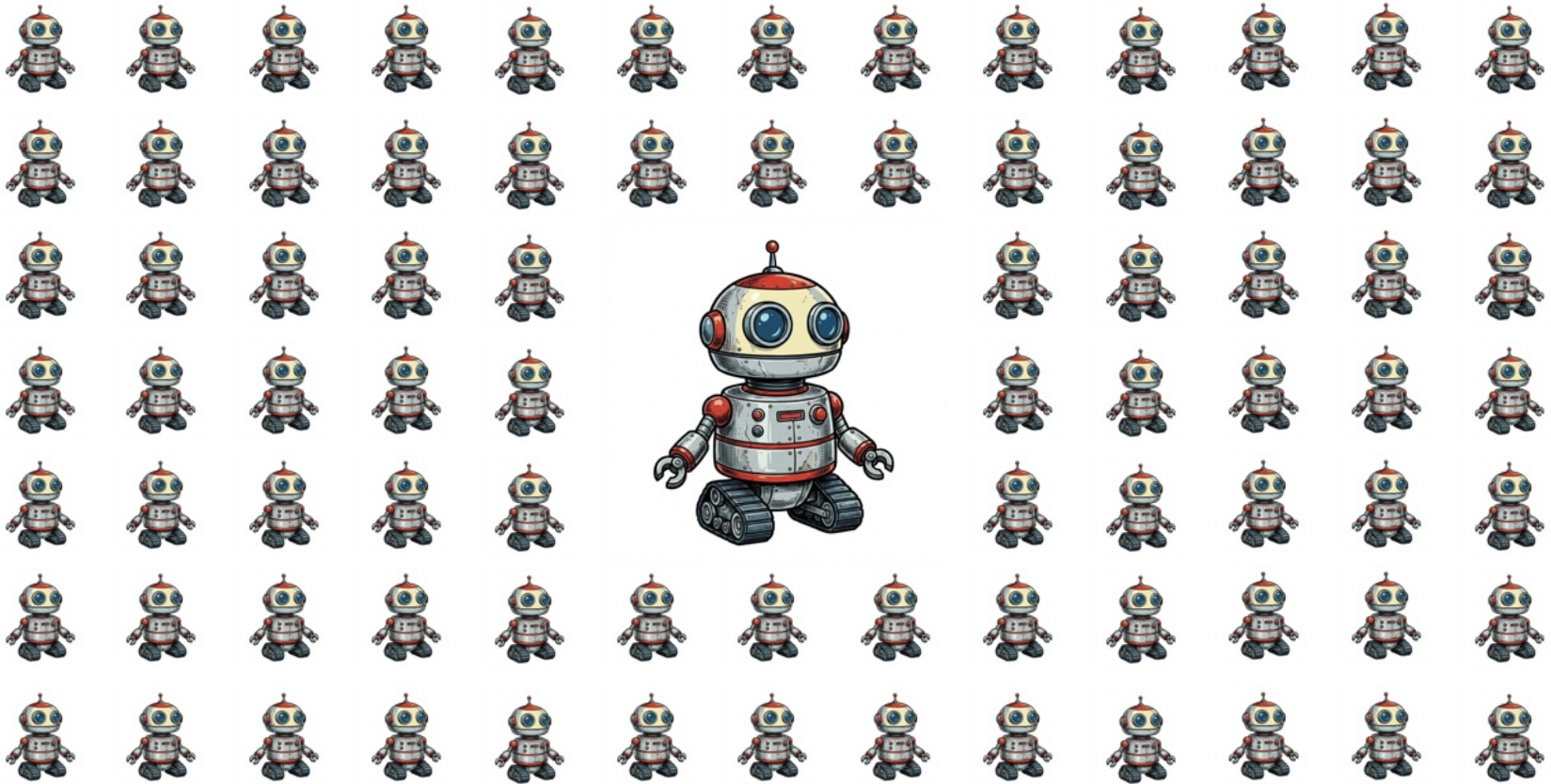
Research the customer and prepare a personalized info package for the meeting











The Role of Human



"We are the last generation of humans who represented the highest intelligence on earth."

What is the role of human in the age of AI?

According to research, 90% of the workforce needs to be reskilled due to AI.

Those roles that require humane characteristics will stay with us much longer than those roles that require specific expertise.

Power and money will concentrate rapidly, which will make societies more volatile and fragile.

Our aging population and demographic crisis will force us to adopt AI to save welfare services.

Humanity

AI

How can I prepare?

Head toward the change, not away from it.

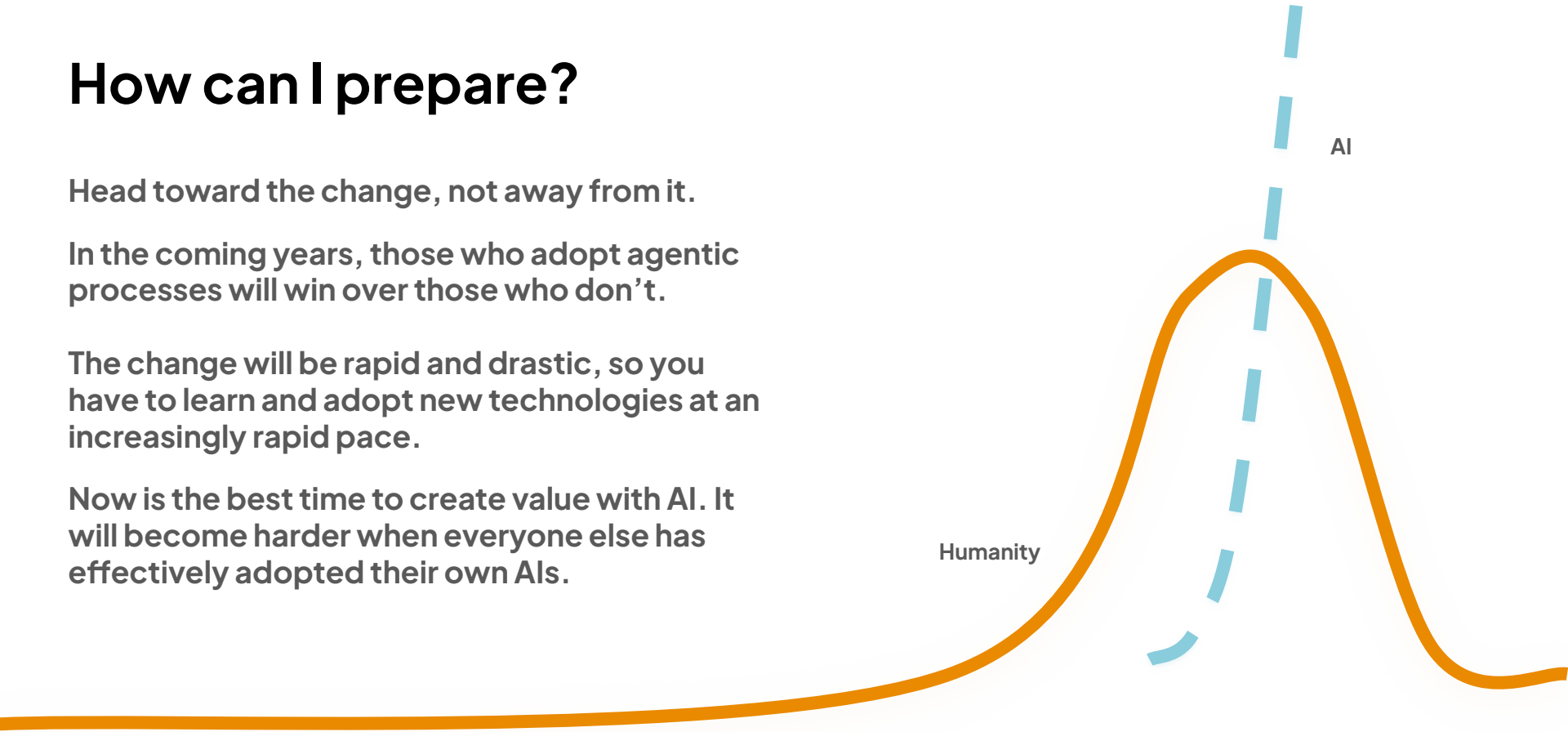
In the coming years, those who adopt agentic processes will win over those who don't.

The change will be rapid and drastic, so you have to learn and adopt new technologies at an increasingly rapid pace.

Now is the best time to create value with AI. It will become harder when everyone else has effectively adopted their own AIs.

Humanity

AI



Do we have any hope?

We can solve all of our problems with AI.

If we learn to share the value created with AI fairly, the outcome can be good for us.

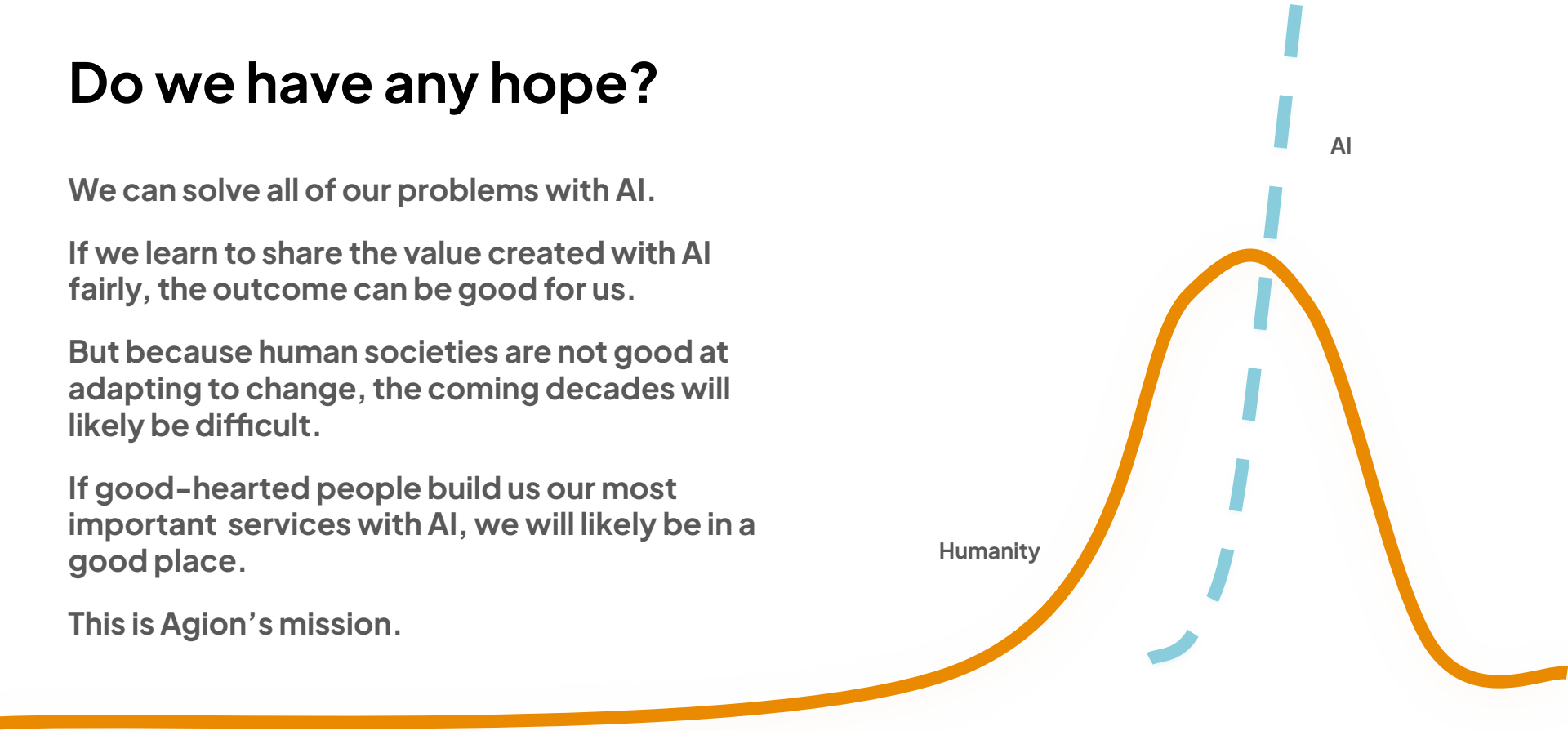
But because human societies are not good at adapting to change, the coming decades will likely be difficult.

If good-hearted people build us our most important services with AI, we will likely be in a good place.

This is Agion's mission.

Humanity

AI



Thanks!



Mikko Alasaarela
Co-Founder, Chair
Agion

+358449821226
mikko@agion.dev